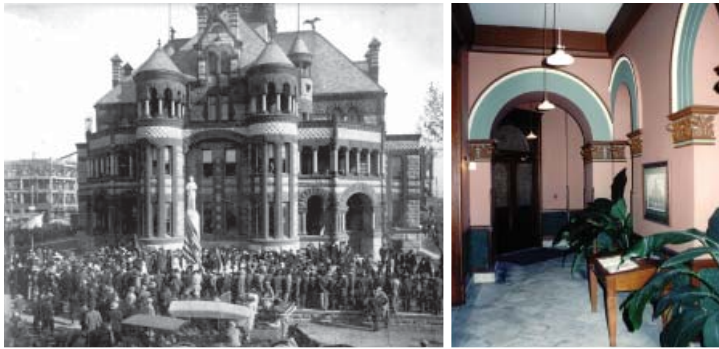


Ellis County Courthouse Restoration



The Ellis County Courthouse is a favorite in the state for its elaborate "Pecos Red" sandstone carvings and expressive Romanesque Revival form. Designed by J. Riely Gordon in 1891, the building epitomizes his style. The restoration was comprehensive and included both county and district courtrooms and their century old judge's benches. New systems, state of the art audio-visual equipment, security and acoustical treatments were integrated into the historic spaces. The remainder of the building was rehabilitated for county government use. The completed restoration serves as a beacon for historic downtown Waxahachie.

Location

Waxahachie, Texas

Project Duration

Phase I 1997 - 1998

Phase II 2000 - 2003

Cost of Construction

Phase I \$1.7 million

Phase II \$7.8 million

Total \$9.5 million

Square Footage

35,000 square feet

Scope of Services

Master Planning

Historic Structures Report

Detailed Existing Conditions analysis

Assistance with Fundraising

Architectural

Historic Preservation

Phased Construction

Awards and Publications

Building Restoration Award for Ellis County Courthouse, Preservation Texas

Summit Award for Construction Excellence, Dallas Chapter of AGC

Engineering Excellence Award, Gold Medal Winner, Texas Council of Engineering Companies

"Ellis County Courthouse Restoration," Texas Architect